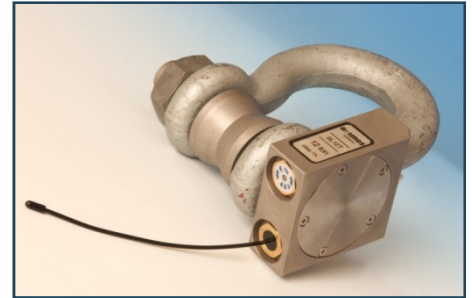


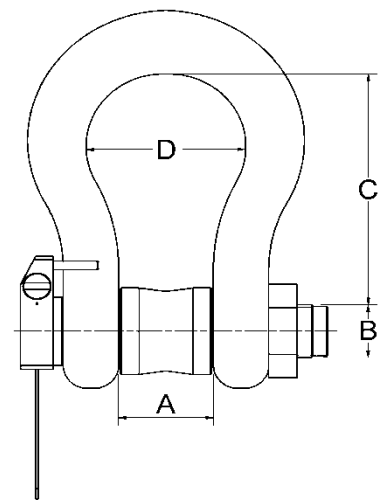
SL Series - Telemetry Load Shackle

SL Series of radio telemetry shackles provides a robust and reliable solution to a variety of lifting applications.

The embedded microprocessor-based electronics are housed within a rugged IP67 enclosure, ensuring exceptional protection from mechanical damage. Providing highly accurate information, the SL Series can be used to determine the actual weight of the load.



Dims (mm)	A	B	C	D	Weight	Model
25 tonne	73	51	178	127	20 kg	SL025T
35 tonne	83	57	197	146	29 kg	SL035T
50 tonne	105	70	267	184	51 kg	SL050T
85 tonne	127	83	330	200	76 kg	SL085T
120 tonne	133	95	372	229	130 kg	SL120T
150 tonne	140	108	368	254	163 kg	SL150T
200 tonne	175	130	500	290	250 kg	SL200T
250 tonne	200	140	540	305	305 kg	SL250T
500,800, 1000 tonne	Sizes on Request					



Technical Data

- Material: High tensile steel
- Range: 50metre (250m extended antennae)
- Class Accuracy: +/- 0.5% FSD
- Temperature range: -20 to +70° C
- Battery life active: 250-1000 hrs
- Safety factor: 5:1
- Enclosure: IP67

For more information or to discuss your requirements please contact:

IMES Ltd

Prince of Wales Road

Sheffield S9 4DZ UK

Tel +44 (0) 114 284 1840

Email info@imes-group.com

